

3/4G HD Solar Security Camera



3/4G HD 3.4 Megapixel Motion Activated & Time Lapse Solar Security Camera

Live view our Solar powered 3.4 megapixel camera from any web enabled device including PC, Mac, Ipad, Iphone etc. No software or Apps needed. Secure user name and password login worldwide. No power, No Internet, cabling is out of the question! It really doesn't matter.

Our **3G/4G or WiFi** enabled HD Solar Camera can be mounted anywhere, provided there is at least some mobile phone network or WiFi signal. If you're mobile phone has cellular reception at the camera location, Solar Cam will function and with a high gain antenna, mobile reception can be boosted if needed.

Motion activated or time lapse, recorded images are saved to our secure SSL servers (similar to Cloud) meaning no matter where you are, there is always up to to the second remote monitoring access including various alarm notifications in the form of emails alerts with image attached. Now with Interchangeable wide angle and telephoto lenses.

Pole mount the camera and solar panel, aim and switch it on. Nothing more to do and very cost effective. Easy to move from one location to another with no professional installation required. **Call our office to see an online test camera demonstration** & pricing.

3G HD Solar Cam is available in a range of mounting options including this latest release featured below. Note the solar panel with totally optional motion activated LED Flood light and audio speaker.



HD Live Solar Security

Features you want at a price you won't believe

NEW!



Fantastic Quality



Advanced cross platform interface

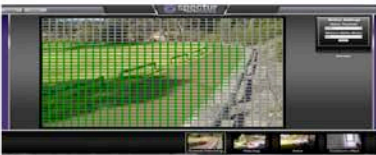
A complete remote, HD solar system.

It might sound too good to be true, but our revolutionary system comes at an unbelievably great price. Specturs' advanced features include: Full Live Remote Viewing: High Definition Images: Advanced Motion Alarms: Spoken Warnings: Full Remote Control: Cloud Storage: Time Lapse.



Live View in HD from any web enabled device

From wherever you are, in real time use our advanced computer or smartphone interface to access and control your cameras. . We use 3G networks to bring you live action.



Advanced Motion Detection Alarms

Our motion detection algorithms are so advanced that they can tell the difference between moving vehicles and moving shadows. They can tell the difference between a cat, and a cat burglar. Alarms are sent to you via e-mail in seconds and stored to our cloud server.

3G/4G
(excludes SIM card)

Everything You Need Is Included

The system comes in a powder coated, waterproof enclosure, with a sunshield and tough, high visibility window. Also included is a 20w solar panel, 50w LED light, battery and regulator. Our revolutionary camera system has 3G built in. It just needs to be mounted and turned on.

Call us now

Our technology is tried, tested and proven with 100,000's of camera hours in the toughest installations.
Australian technology for Australian conditions.

How does it work?

If you need to live view your site, require motion activated and/or time lapse HD recording, standard CCTV cameras are not an option due to cost, labour intensive, power is too far away or not available, no Internet, running cables is out of the question, then 3G/4G SolarCam is the ultimate security camera solution for you.

We have taken Solar Security technology to whole new level. **3G/4G HD Solar Cam** is simply outstanding. Totally Australian owned and designed from the ground up. A 1-2 GB per month 3G/4G Data SIM card is all you need. We can supply the SIM or you are most welcome to supply your own. If you have WiFi available onsite, even better as NO SIM will be required at all. SolarCam can use either the 3G/4G Telstra network (or any other Australian or International carrier) or WiFi meaning we have you covered every which way.

Everything you need is included. Solar Cam is 100% Australian built and locally maintained so we are ready to assist with any technical support and/or remote setup. Supplied within a powder coated weatherproof enclosure (now 1/3 smaller than pictured above) with sunshield and high visibility window, 60W Solar panel and solar charged 12V55A deep cycle battery. The 50W **motion activated LED Floodlight** and/or audio warning speaker are both optional but normally included.

Even at times of particularly poor weather, the internal battery has sufficient power to keep the camera working for at least 3 days. If you need longer battery duration, a larger capacity battery is not a problem. Even in poor weather, the solar panel will trickle feed power to the battery meaning a larger battery isn't necessary. In the unlikely event that the battery goes flat, the built in Watch Dog will auto reboot when adequately charged although battery status is remotely monitored for any abnormality.

How do I remotely monitor & access the camera?

The advanced SSL secure Cross Platform interface (like a Cloud) allows for remote access via PC, Mac, Iphone and any other web enabled device. User name and password protected for authorized access only, owners are not limited to the number of users permitted to access the camera however password access can be altered remotely at any time. In fact, every feature and function of SolarCam can be remotely accessed WITHOUT the need to physically touch the camera.

What about Motion Detection & Time Lapse

Yes indeed! The motion detection algorithm is so easy to use. If the camera is aimed at trees, bushes or a busy road etc, users can easily "mask" those regions thus training the camera to ignore movement in designated areas. This algorithm is so advanced it can tell the difference between a cat and a cat burglar.



By setting the desired motion detection zones, the camera will only concentrate on areas of concern. In **Scheduled ALARM Recording** mode, single or multiple users may receive motion activated “alarm” email alerts within seconds (picture attached to the email) whilst our Cloud servers will safely store the alert so nothing is ever lost.

Time Laspe recording is often desired on Building & Construction sites. It’s therefore quite easy to set the camera to record Time Lapse by day and at the same time record any onsite motion to internal memory. After hours (in scheduled ALARM recording mode) the camera will auto switch to server recorded motion detection with email alerts if desired. Ideal for farmers, water troughs, unattended machinery, fuel, gates, **Construction Sites** or any site that needs LIVE security camera remote monitoring and scheduled recording.

How does Solar Cam see in the dark?

This is where other CCTV security cameras tend to be obsolete but we have this aspect covered. Many LED Flood lights are 12V powered, same as our 3G HD Solar Camera. Consequently, when motion is detected, with a 50W floodlight interfaced with the camera will illuminate for a designated period of time allowing the camera to record high-resolution quality at night and in colour. When motion ceases, the LED will switch off to conserve power. The key to our system is power conservation versus power generation.

Infra Red or IR has a number of “disadvantages” compared to LED bright lighting. IR is of no use to a colour camera because a colour camera cannot see IR. The camera needs to auto switch to B/W mode at night. IR offers a distorted on unrealistic view where a persons eyes glow or appear to be florescent, clothing and skin tone has no colour or definition and more often than not, in terms of positive identity, it can be difficult to determine whether the person is male or female. Not the best option for security.

Our 3G HD Solar Camera is available with an “optional” 50W **LED Floodlight**, interfaced with the camera battery.

It’s no secret that outdoor lights (12V or 240V) can be triggered by motion as many homes & business have them already. In this instance, we provide options if night vision is needed.

1. Order the camera with an LED Floodlight as pictured
2. Order our independent 50W battery operated, motion triggered and solar powered floodlight. This option means there is no added drain on the camera battery. If the LED Floodlight is triggered it will also cause the camera to record as it senses this as motion.

Provided the area under surveillance is already reasonably well lit at night, adding an LED Flood light may not be required. The end result is higher quality recording and positive ID. The floodlight serves two purposes actually. Yes it assists the camera to see and record in colour at night but its also an great trespass or theft deterrent. Include the motion activated warning speaker and what you have is something quite special in terms of camera security.

12V motion activated LED Flood lighting is optional so it can always be later added if needed.

When remotely logging into your 3G Solar Security camera. if the system is fitted with a 12V LED Flood light, it will automatically illuminate at night enabling you to see regardless of motion. When you log out the light will switch off. This is just one of many new features recently added at no extra cost.

Are there ongoing monthly or annual costs?

Think of the 3G HD Solar Camera as a mobile phone. Users may supply their own Telstra or Optus 3/4G DATA SIM card. About 1GB per month is all that's needed. We provide each camera with a Cloud server data plan, which is about \$1.00 per day but that also includes our continual backup and support.

International customers must supply a local data SIM card. Our camera will function on any mobile phone network or WiFi. Call for more information. Monthly/annual plans can be altered.



How fast is the LIVE Monitoring & Recording?

In terms of "LIVE VIEWING" it's simply a matter of letting us know how fast you need to view. 1-2 frames per second are recommended. Remember, data is being used even when live viewing. Users select low, medium or high resolution all of which has a bearing on data usage so it's important not to live stream for extended periods if possible unless your plan is on the larger side. The recording on the other hand can be as fast as 10 images per second up near cartoon speed.

The same applies to motion detection recording. Resolution can be set to low, medium or high whilst the recording speed and number of images recorded during motion is adjustable to suit individual needs. For example, when the camera senses motion, you might want the camera to save 2 images before motion was detected and during the next 20 seconds, record another 10 images 2 seconds apart but that can be remotely adjusted to shorter or longer duration. The resulting playback looks video like in any event and each image can be digitally zoomed up to 14 X magnifications.

An email alert or text can be sent to you when alarm mode is active thus notifying you that motion has been detected. From your mobile phone or PC, access the camera and replay the alarm alert recording or simply live view. Any evidence that needs to be saved to PC hard drive is simply a matter of selecting the desired recording and pressing save.

Tell me more!

As the 3G/4G HD Solar Camera technology becomes ever more advanced, don't worry you won't be left behind. Software and firmware changes will be available at no extra cost for all of our customers, provided that change is not hardware related. As demand for more and more features increases, our system designers and IT experts will be right there. For any technical support or assistance you only need to call or email.

The 3G/4G mobile network instantly delivers motion recordings to our Cloud servers. So when we say you "live access" the camera, we actually mean you access our cloud or secure servers to see the camera LIVE, play back recordings and remotely change settings as desired. Customers are NOT communicating directly with the camera as such, so it's important to understand why our Cloud servers are needed. This is the brain behind every camera facet, including lens focal adjustment.

This camera is so smart, it can even record 3 seconds BEFORE motion was recorded. It's called pre-recording. How it works doesn't matter, just know that it does.

Can Solar Cam warn off intruders?

Absolutely! With the inclusion of an external speaker (see the main camera image) if motion is detected in ALARM mode, a pre recorded audio warning will announce the following "warning you are being recorded" If for any reason you need to switch the audio off, you can do so yourself by simply logging in and disarm audio. Simple yet very effective.

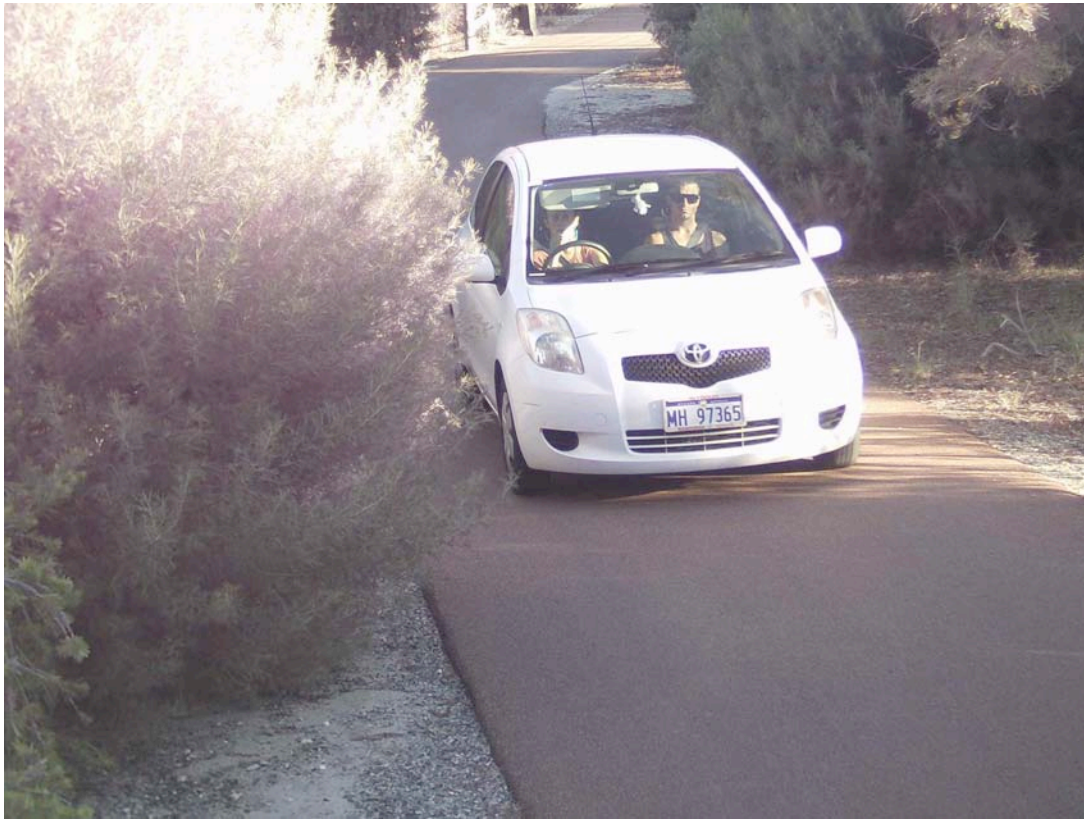
Ideal for;

- Schools
- Construction Sites
- Farms
- Industrial Sites
- Car Parks
- Sheds
- Remote Sites
- Display Homes
- Unattended machinery
- Councils
- Bush Dumping
- Prohibited zones
- Fuel Bowsers
- Mine Sites



Recording Quality Examples

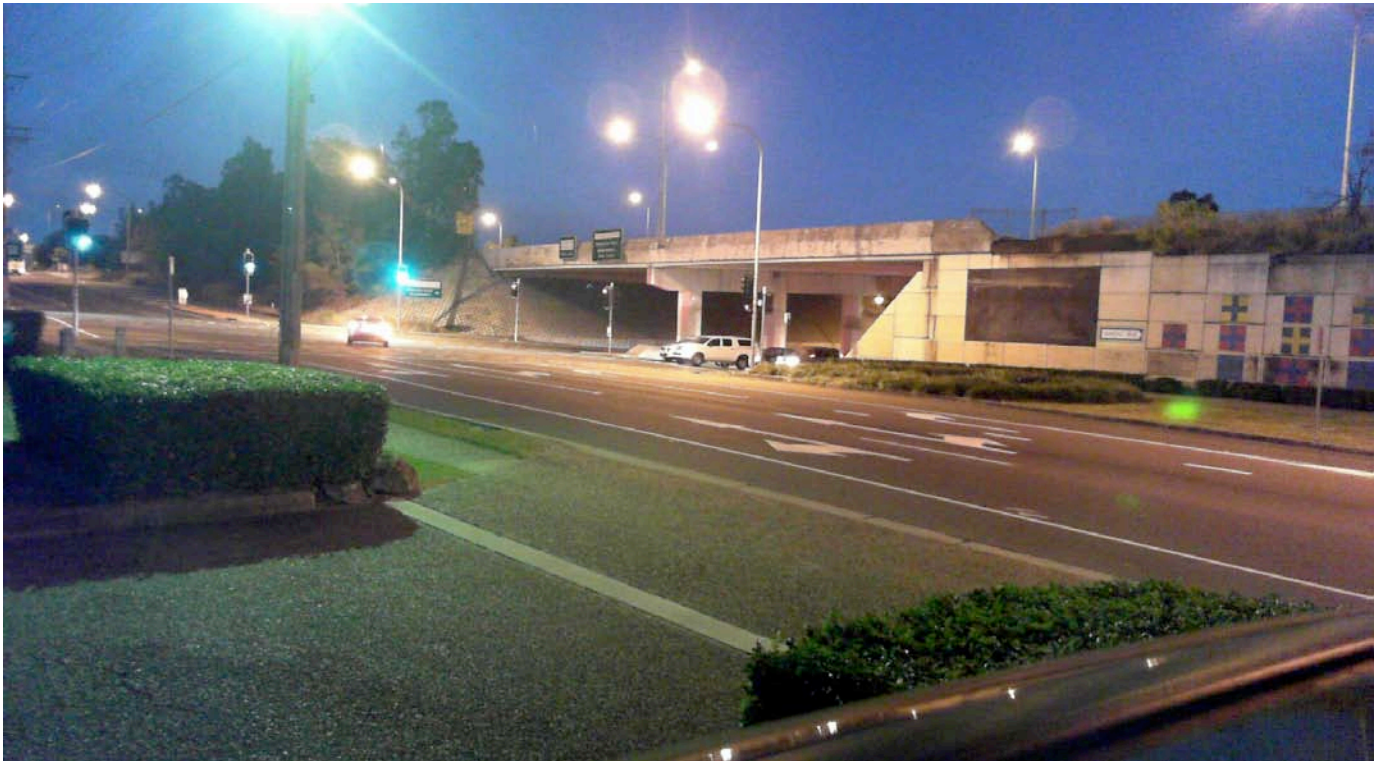
This is our basic 2MP camera. We now offer 3.4MP with wide or telephoto lens but see the quality and no mistaking the number plate !!



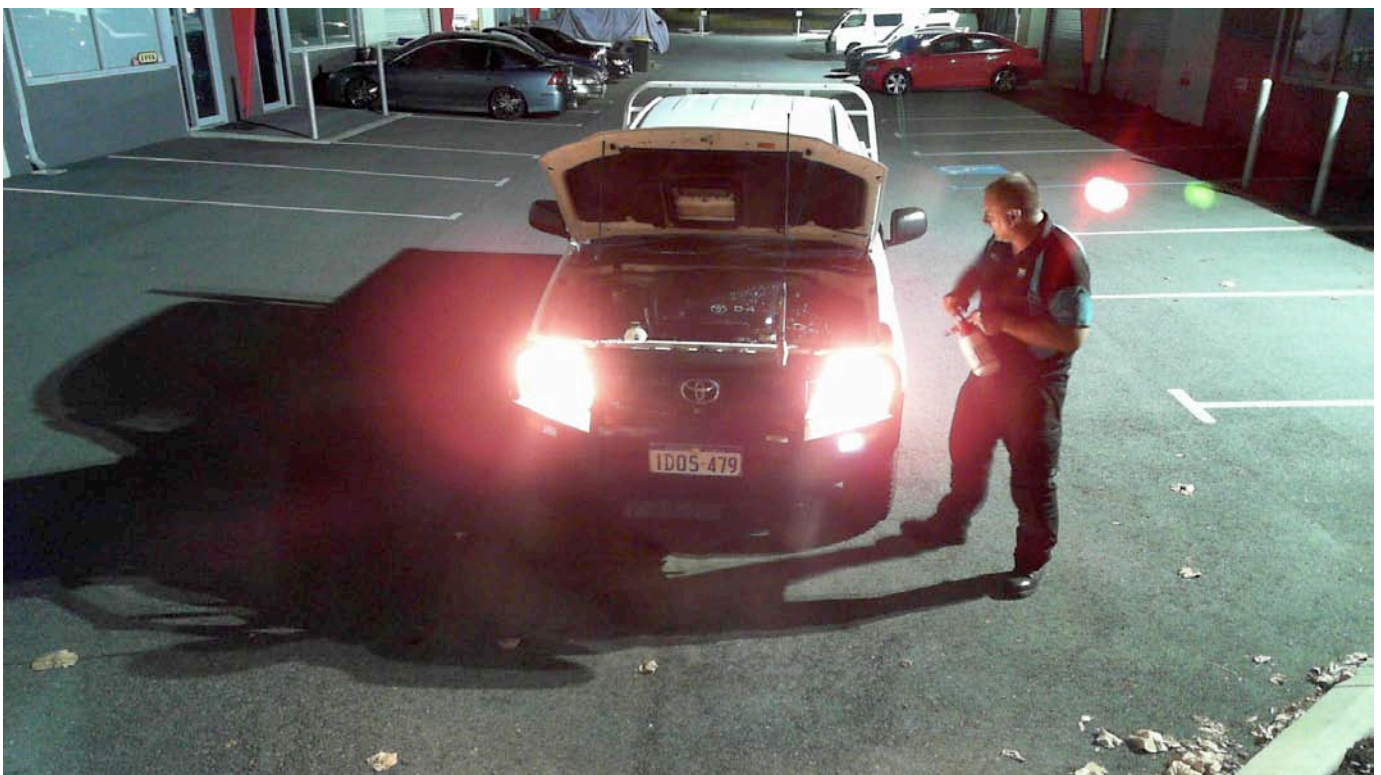
Here we have a weigh station. Again great quality and only 2MP and no problem to zoom in on the number plate



Outstanding quality night vision with no LED assistance other than typical street lighting!



Same camera in total darkness situation with 50W LED illumination



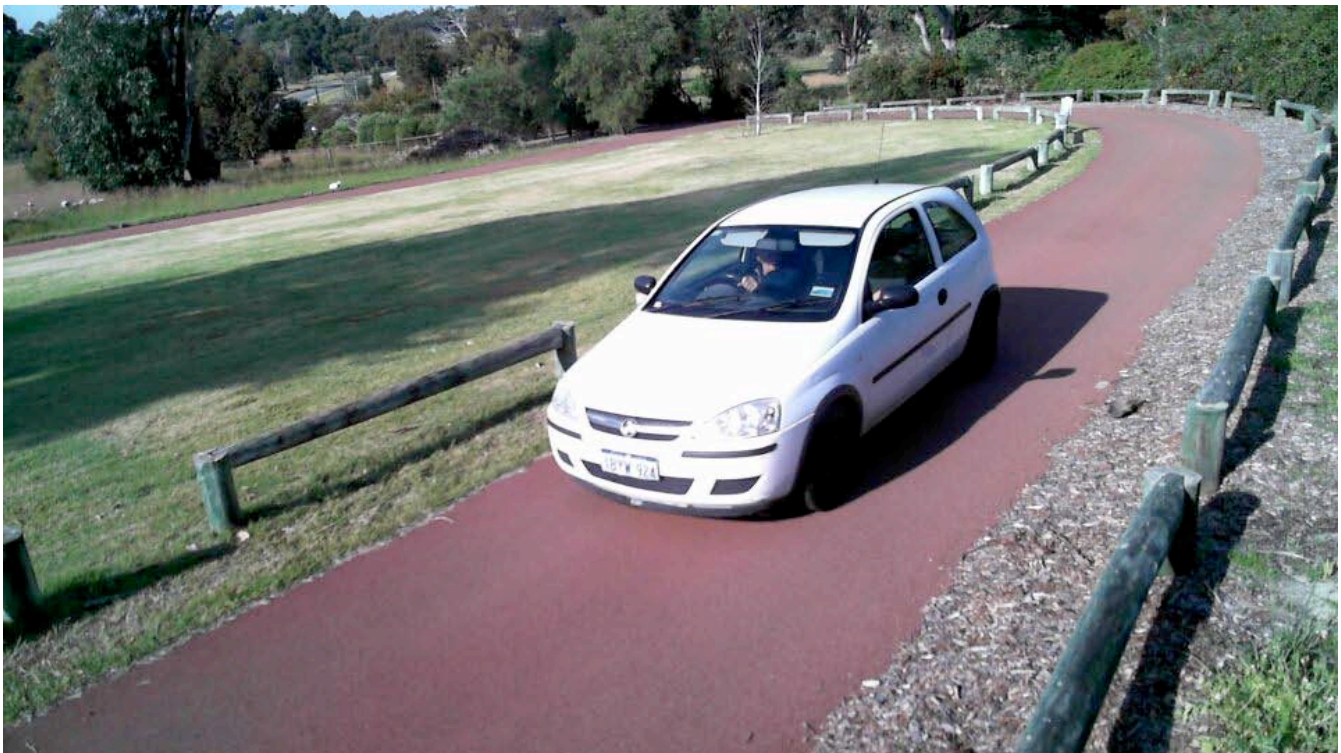
The images depicted in this brochure have been size reduced for demonstration purposes although it might be timely to point out the recording quality can be set to Low, Medium or High 3.4 Megapixel quality which is much larger than depicted below. Recording in such high resolution means you have the ability to “zoom” and in detail, to identify people and and in many cases read number plates from a distance.

Mounting the camera in the correct location is fundamentally important (avoid aiming at direct sunlight) and in some cases perhaps a few cameras may be needed to cover more area or multiple zones. Customers normally supply a mounting pole otherwise the side of a building is fine. The solar panel should be mounted Northerly direction at about 30 degrees.

If you have a need for security cameras at various sites (even different cities or states) even Internationally, our software allows for users to view all cameras live at any time. The main camera will be depicted full screen whilst other cameras will be small thumbnail size although by simply touching upon the thumbnail camera, full screen viewing and playback is depicted. It's what we call **advanced cross platform interface**.

In other words, one login to view all cameras everywhere. Safe and secure and no unauthorised access.

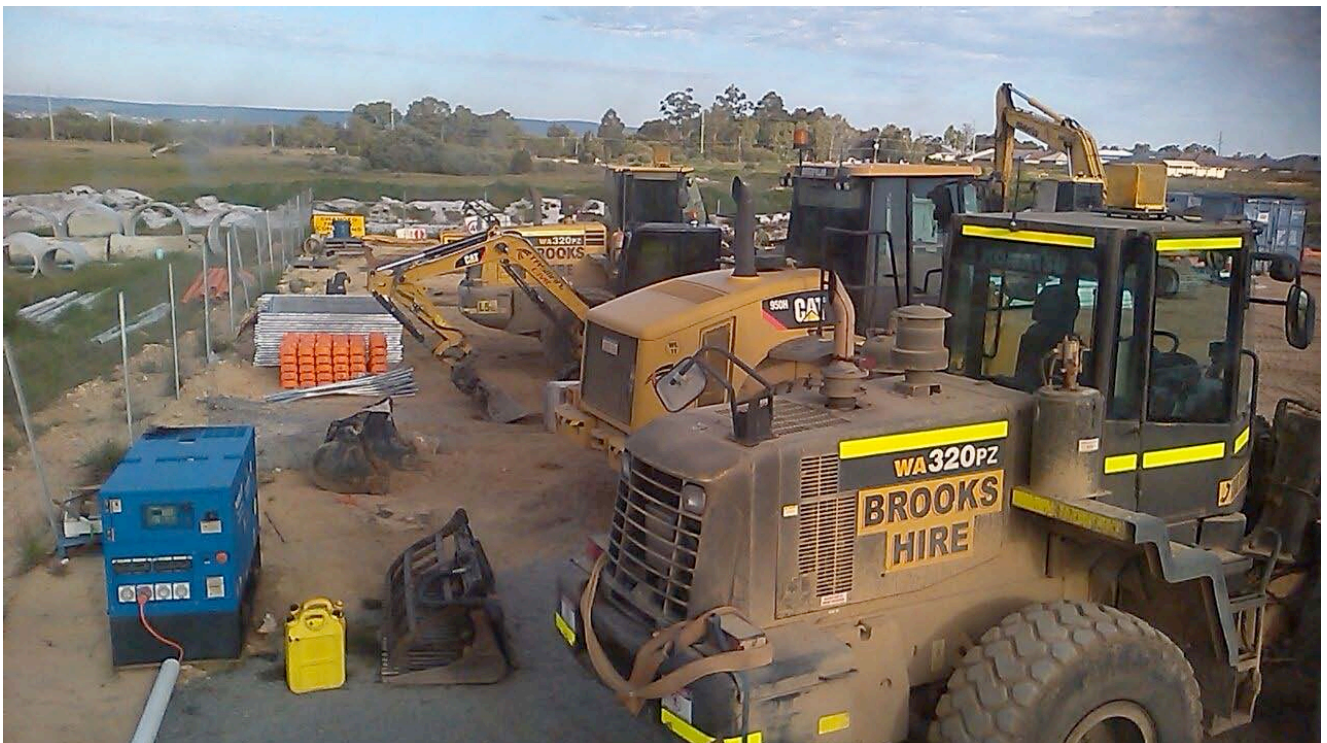
Typical daytime image set at medium resolution



Night Vision with only our 50W LED Flood light for illumination



Daytime image set at High resolution



Building site at medium resolution



I live overseas so can I still buy Solar Cam & will it work?

In a word..absolutely! 3G/4G Solar Cam will function as intended worldwide provided you have a mobile phone service in the camera location. There is a small monthly or annual Cloud server fee for remote storage and access to the camera (same small cost worldwide) however, International customers will need to provide their own 3G/4G Data SIM card (voice is not necessary) with at least 1-2GB data allowance per month. This could be a pre paid or annual carrier plan but a SIM card is not something we can provide to international customers.

In order to save cost (and freight cost) the best option for international customers is to locally supply a 60W solar panel and 12V55A battery. A battery is heavy and a solar panel cumbersome so from a cost point of view it makes practical sense to at least provide those two items locally which are easy to purchase anywhere.

Contact us for specifications

Is there an option for Internal & External Recording?

As a major new in house system development we are very pleased to announce that our Pro Series 3G/4G Solar Camera now supports **USB Flash drive recording**.

To put this into some sort of perspective, let's say your camera is pole mounted on a large or small building site. We know there will be plenty of activity every weekday from 6.00am to 4.30pm. We also know the site is closed at night, all weekend and state by state public holidays.

With a 64GB USB Flash drive interfaced with the camera, the camera can record motion all day up to 10 images (frames) per second at 2MP quality. However, as the motion activated recording is saved to the flash drive, it's **not using 3G or server data**. When the flash drive is full it will auto over write or recycle recording and never requires formatting or deletion.

However, at night or during a scheduled recording mode, the system then ignores the flash drive and auto records any motion to our remote cloud servers. Users access our Cloud servers to replay night, weekend or public holiday motion activated events. Email or text alerts are connected to the scheduled recording mode and not during that day when the site is most active.

The advantage of flash drive recording means that users are not losing any site activity by day. It's still recording at high resolution and high speed but users have the ability to now REMOTELY ACCESS that flash drive directly from any PC, Mac or mobile phone. That's right, **flash drive recordings can be remotely played back**. Simply unbelievable and sensational technology.

This is tantamount to having a Network Video Recorder (NVR) on each and every camera site and all solar powered. **Try and do that with a security camera system?**

What about a telephoto lens?

The latest "Enterprise" addition to our 3G/4G 3.4 Megapixel Solar Cam is the option to interchange the camera lens. This adds a whole new dimension in the sense that should you choose for example to order a camera system with a 120 degree wide angle lens but it's too wide, let us know and we will exchange the lens for a more telephoto lens. Easy to do and that solves any problem.

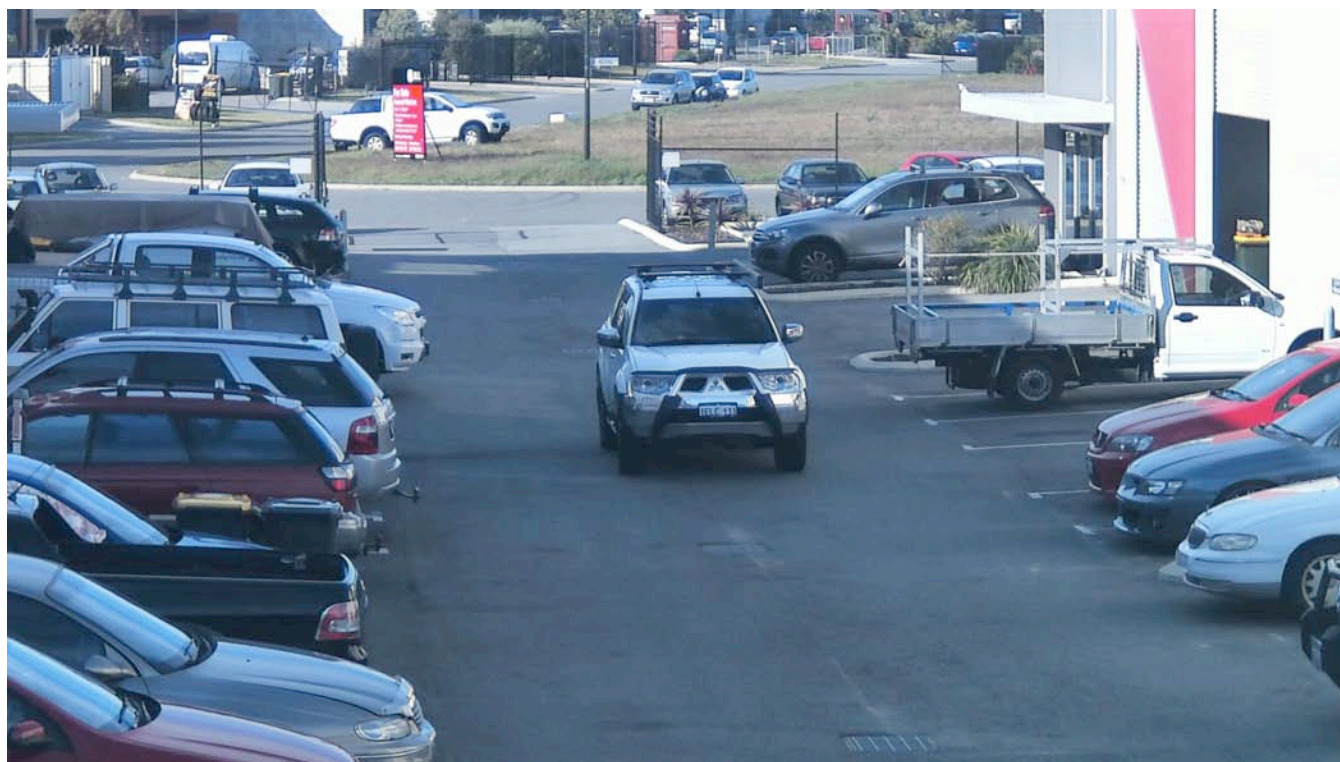
Not be confused with a remote zoom lens or Pan Tilt camera, the standard 2MP camera has a fixed wide angle 100 degree lens whereas our new 3.4MP systems have the option to interchange the lens from wide angle through to 20 degree telephoto which can read a number plate at 100m +.

This means the camera can be perhaps mounted in a more secure or distant location. It is important to understand that the more telescopic the lens, the more narrow albeit close up field of view and the more light it needs.

Both the Basic Entry and Pro series cameras have a fixed wide angle lens. Customers often ask what to expect in terms of camera width and field of view. The easiest way to explain what you are likely to see from a standard wide angle lens is tantamount to taking a site picture with an iPhone camera or similar. The quality of iPhone pictures is outstanding. The ability to zoom or enhance a picture is also quite easy and same with our 3/4G SolarCam.

The camera lens is fixed so it cannot pan or tilt (left right up down) in any direction other than zoom in and out both on the recording and live view.

Pictured below is our 3.4MP camera by day at medium resolution. The Mitsubishi in motion and being driven toward camera at this point is still 55m away. This is our 40-degree interchangeable lens.



If 240V or 12V power is available onsite can I use it?

Yes you can and this makes it all much easier and cheaper because you don't need a solar panel, charger, battery and a few other hardware components. If power is handy not only is the entire system much smaller, its also cheaper as we don't need to supply the solar hardware components.

If you see the Option 2 image below, note the CCTV housing fixed to the side of a pole. This is what you can expect from a 12V powered 3G Camera system. The camera and quad processor, 3/4G USB dongle, 64GB internal memory etc are all concealed within the one smaller CCTV housing.

We will also provide a 12V 9A power supply so there is only one lead from the camera direct to you're GPO power point. No electricals are required simply connect to a power point and its done.

If you choose to add the 12V LED Flood light and/or speaker, no problem it will accommodate those as well.

I have multiple sites so can I buy the camera only?

For those who require multiple camera systems, we have the ultimate cost effective solution for you. It's wise to initially purchase a full sample system ready built to be familiar with the camera and how it works with the hardware components.

Once again if you see Option 2 below, your system can look as pictured. For those customers preferring to supply many of the hardware components locally, ie battery, solar panel etc, we can supply just the camera "bare bones" or sled.

The sled consists of the camera module (not much larger than a lipstick actually) and a small quad processor board with 3 x USB ports, USB network Dongle and perhaps the pre-wired CCTV camera housing. Customers are free to supply the other hardware components thus saving cost.

The sled fits neatly into the CCTV housing. In terms of what you prefer to supply, basically you will need the following;

- 60W or larger Solar Panel
- 12V 55A rechargeable battery
- Battery case (as pictured or similar)
- Optional LED Motion flood light and or speaker

If we supply the SLED and you are able to supply all other hardware components, the system is ready. It saves cost both hardware and freight and again ideal for all international orders and larger order customers.

Solar Cam New All in one Option 1

Pictured below is our latest release all in one 3.4 Megapixel Solar Cam system ready to mount and switch on. The battery, camera, circuits etc are securely housed in the one lockable metal enclosure for easy access and no exposed cables.

As an added deterrent, the blue and white Police like emblem (optional) is a visual warning that the premises may be camera monitored and not to be underestimated. In other words the camera is not hidden.

The LED motion activated flood light serves two purposes as well. Illuminating the area at night thus assisting the camera to record in high resolution colour, and a visual warning to any intruder which in many cases is all the deterrent needed to move on. The intruder will be recorded, often he/she will look directly at the light/camera and a nice facial ID recorded.

The pictured optional speaker on the side of the metal enclosure will announce a pre recorded warning if motion is detected during a **scheduled recording mode** with words to the effect that "you are being recorded" This system is Ideal for pole or wall mounting. Normally customer supply and install a 4-5M x 100mm steel pole. The camera casing is now 1/3 smaller than pictured. We also now provide dual PIR and camera motion detection algorithm to detect motion. Both systems need to trigger before recording so you know the recording and alert is real.



Solar Cam CCTV Housing Option 2

Pictured below is our 2 or 3.4 Megapixel Solar Cam system ready to mount and switch on. Once again the battery, camera, circuits etc are securely housed in the one lockable metal enclosure. Pictured is the motion activated LED Flood light, 60W Solar Panel, camera concealed within a typical outdoor and weatherproof CCTV housing whilst the battery and solar charger are contained within an IP rated outdoor lockbox.

Note that all components are fixed to an alloy 100mm square pole. We recommend the pole be approx 4 – 5m in height and dynabolted or cemented into the ground. Otherwise any sturdy structure is fine. The solar panel needs to face North at about 30 degrees and not shaded at any time. The solar panel cannot charge the battery when shaded.

If power is available on site and solar is NOT required, disregard the pictured Solar Panel and battery box it won't be necessary. The only components you will need are the pictured CCTV camera housing, perhaps the LED Flood and/or warning speaker and the 12V9A power supply intraced withb the camera. The lead to the camera can be any length required, even an extension lead.



Need more information

Tel 1300 763235

Hidden Camera Surveillance & Solar Cam
A Division of Forrestbridge Pty Ltd Est. 1982
PO Box 773
Ashmore City QLD 4214

Email: sales@solarcam.com.au
URL www.solarcam.com.au